

THE EDGE

ACCELERATE YOUR INNOVATION



EMBEDDED BRILLIANCE

SMART BOARDS /
SMARTER COMPONENTS /
ULTIMATE PERFORMANCE

SEMICONDUCTORS / PASSIVES / SENSORS / POWER MANAGEMENT / WIRELESS /
CONNECTORS / TEST & MEASUREMENTS

Find more online at
newark.com/board-level-components



WELCOME


ACCELERATE YOUR INNOVATION

Unlock rapid prototyping and innovation with Newark's comprehensive selection of on-board components and tools. In the following pages, you will find the latest product series and development kits from leading semiconductor manufacturers, including ADI, AMD, NXP, Renesas, and STMicroelectronics. We also feature passives from Littelfuse, Panasonic, Vishay, and Yageo, as well as the latest connectors and sensors from Amphenol, Molex, and TE Connectivity. Additionally, we have included some of the most popular test and measurement solutions from partners like Keysight, Tektronix, and NI for your most demanding test and measurement needs. Finally, you will find the latest products from Raspberry Pi for your prototyping and production needs.

Newark provides access to an expansive inventory to support your business throughout its entire product lifecycle – from initial design and prototype, through efficient product building, to reliable maintenance and repair solutions.

Newark also assists designers and purchasing managers with procuring hard-to-find components and developing custom products, saving you valuable time and resources.

Buy with confidence, knowing Newark simplifies your e-procurement journey. As a pioneer in electronics distribution, we offer seamless integration with all major e-procurement platforms through punch-out and custom catalogs, search APIs, our free iBuy tool, and electronic order and invoice integration. Whether you need a specific development kit to explore cutting-edge technologies or a reliable supply of essential on-board components, Newark is your trusted partner, committed to providing the products and services you need to bring your designs to life efficiently.

**ALL
ON
BOARD**  **SEMIS.
PASSIVES.
CONNECTORS.**

Your destination for
on-board components.

newark.com/board-level-components



FEATURED SUPPLIERS



ANALOG DEVICES

Provides innovative solutions for the Intelligent Edge, including analog and mixed-signal devices, power management, RF offerings, edge processors, and sensors, bridging the physical and digital worlds.

Phased Array Radar Kit for 10GHz Radar & 5G



Phased array platform for 10GHz radar, 5G, and satcom. Features electronically steerable antennas and beamforming for robust signal direction and interference suppression.

Zynq-7000 SoC Evaluation Kit for JESD204B Interfaces



Xilinx Zynq-7000 SoC kit for JESD204B, supports 12.5Gbps lane rates. Interfaces Radio Verse transceivers with 12V supply, PC monitor, or evaluation software.

Single-Axis Stepper Motor Driver



Single-axis stepper driver, 4A max, 9-24VDC. Features stallGuard2™, coolStep™, RS485/CAN/USB, and sensOstep encoder for high-precision control.

Silent Stepper Motor Driver IC for 3D Printing



Ultra-silent stepper driver, 2A RMS, 4.75-29V. StealthChop2™, SpreadCycle™, UART interface, OTP memory for noiseless, precise motion in 3D printers.

Wireless Asset Health Monitoring with Edge AI



Voyager4 evaluation kit uses AI-driven vibration sensing to monitor motor health, enabling predictive diagnostics and maintenance.

3-Axis MEMS Accelerometer



ADXL380/2 offers ultralow noise, low power, and high bandwidth, suited for measuring audio signals, vibration, and physiological activity.

RF SDR Board for Wideband 2.4GHz Applications



FMC board with AD9361 RF Agile Transceiver, 70MHz-6GHz range. Uses TCM1-63AX+ transformer for wide-tuning SDR applications, optimized for 2.4GHz.

Signal Analysis Learning Module for RF Education



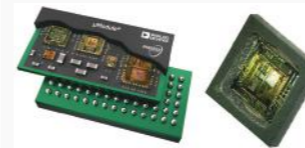
USB-powered data acquisition with 12-bit ADCs/DACs at 100MSPS. Paired with Scopy software, supports signal analysis up to tens of MHz for students.

Audio Bus Debugging Tool for A2B Networks



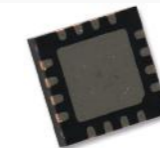
Emulator and monitor for AD242x/3x A2B networks. Configurable for active emulation or passive monitoring, aids design and debug of audio bus systems.

µModule Regulators



Analog Devices' µModule® micromodule regulators and DC-to-DC power products are complete SiP power solutions with integrated components in a compact package.

LDO Regulators



High-performance low-dropout regulators with fast response and stable line/load regulation, used in audio, FPGA/DSP, RF, and instrumentation applications.

Low IQ Synchronous Step-Down Controllers



LTC7803, LTC7805, and LTC7819 are low IQ DC/DC controllers with up to 3 MHz switching and spread spectrum frequency modulation for noise-sensitive applications.

Low Noise 16.5 MHz JFET Op Amp with Rail-to-Rail Output



ADA4620 are 36V JFET op amps featuring low noise and offset drift, ideal for data acquisition and TIA circuits with high input impedance.

RF SDR Platform for Wireless Communication



Software-defined radio module for learning SDR, RF, and wireless comms. Supports 70MHz-6GHz, ideal for students to explore real-world RF systems.

Blackfin/SHARC JTAG Debugger



USB-based emulator for Blackfin/SHARC. Supports program/system trace, cross-trigger, and CoreSight SWD for efficient debugging at 5MHz.

3-Axis Stepper Motor Controller



3-axis stepper controller/driver, 2.8A RMS, 48VDC. TMCL firmware, coolStep™ tech, 8 I/Os, encoder interface for precise decentralized control.

Precision Operational Amplifiers



Precision op amps with traditional or zero-drift tech deliver low offset voltage and drift, ideal for maintaining DC accuracy in analog systems.

Isolator with isoPower Technology



iCoupler®-based isoPower® tech integrates isolated DC-DC power and data transfer in one package, a compact, cost-effective alternative to optocouplers.

Isolated A/D Converters



ADI's isolated ADCs target motor control, voltage/current monitoring, and encoder systems, offering precise measurements with built-in isolation.

Precision DAC



A broad selection of high-accuracy DACs (8-20 bits) with low power and ease of use for precision control and biasing across industrial and instrumentation systems.



multicompPRO

THE ENGINEER'S CHOICE

For Quality & Value
From Prototype to Production

KEY APPLICATIONS



Electronics Lab /
Prototyping



PCB Components



Industrial Automation &
Control



Production & MRO

newark.com/multicomp-pro



TECHNICAL RESOURCES



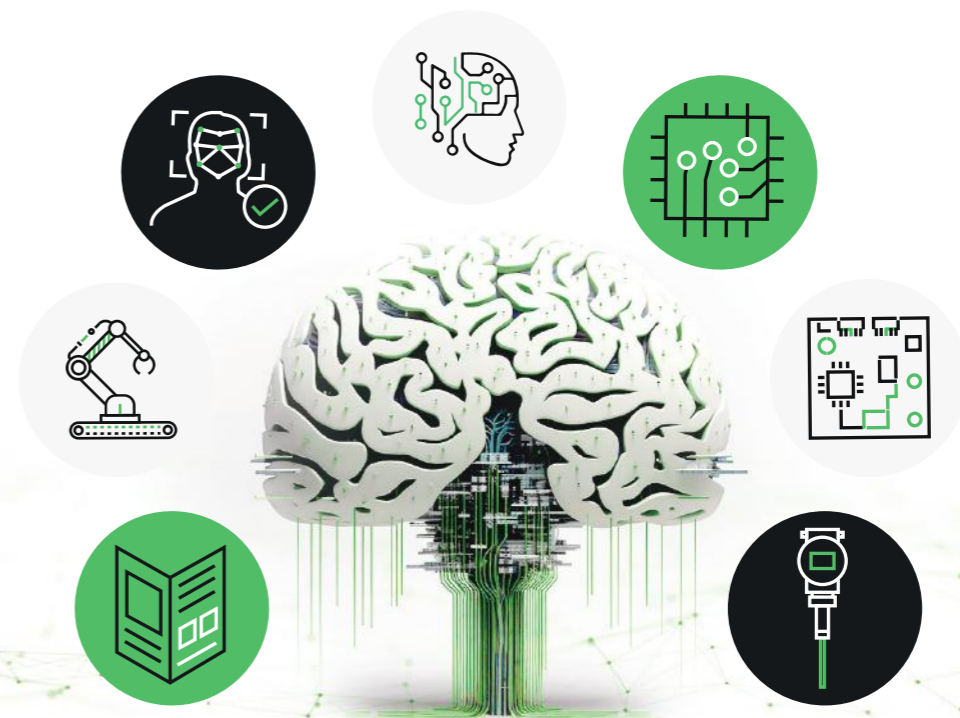
Explore our well-curated library of whitepapers, technical articles, videos, training modules, tutorials, and more to support you in developing your designs, business, and career.

Whitepapers Articles Webinars Podcast How To's

Explore the range:
newark.com/technical-resources

ARTIFICIAL INTELLIGENCE AT THE EDGE

The Hub for Cutting-edge AI Solutions



newark.com/artificial-intelligence





A high-performance and adaptive computing leader advancing the future of data center, embedded, gaming, and PC markets with cutting-edge semiconductor products such as processors, accelerators, graphics, adaptive SoCs, FPGAs, and SOMs. Setting the standard for modern computing.

AMD Kria™ K24 SOM & KD240 Starter Kit



The KD240 Starter Kit features an AMD Kria™ K24 SOM and offers an out-of-the-box ready development platform for motor control and DSP applications.

AMD Kria™ K26 SOM for Vision and Robotics



The AMD Kria™ K26 SOM uses an AMD Zynq™ UltraScale+™ MPSoC for mid-range embedded applications like vision AI, robotics, and industrial automation.

AMD Zynq UltraScale+™ MPSoC ZCU102 Evaluation Kit



The ZCU102 is an AMD Zynq™ UltraScale+™ MPSoC evaluation kit with Arm® cores and GPU, suited for automotive, industrial, video, and communication designs.

AMD Artix™ 7 XC7A100T FPGA



The XC7A100T, part of the AMD Artix™ 7 FPGA family, is optimized for low-power, high-performance applications with high logic/DSP throughput and serial transceivers.

AMD Kintex™ UltraScale FPGA



AMD Kintex™ UltraScale FPGAs feature monolithic and SSI tech for high performance, ideal for 100G networking, data centers, video, medical, and wireless infrastructure.

AMD Kintex™ UltraScale™ FPGA KCU105 Evaluation Kit



The AMD Kintex™ UltraScale™ KCU105 board includes DDR4, HDMI™, SFP+, PCIe®, Ethernet, and I/O interfaces, expandable via mezzanine cards for development versatility.

AMD Virtex™ UltraScale+™ FPGA VCU118 Evaluation Kit



The VCU118 kit supports AMD Virtex™ UltraScale+™ FPGAs with FinFET tech, enabling top-tier serial I/O and signal processing for high-bandwidth systems.

AMD Virtex™ UltraScale™ FPGA VCU108 Evaluation Kit



Designed for high-performance development, the VCU108 kit supports data-heavy systems exceeding 400 Gbps and high performance computing.

AMD Spartan™ 7 FPGA



AMD Spartan™ 7 FPGAs offer efficient performance with low power consumption, and high I/O bandwidth.

AMD Spartan™ 6 FPGA



AMD Spartan™ 6 FPGAs offer high-volume, low-cost integration with up to 147K logic cells, 45nm process and PCIe® support, ideal for embedded designs.

AMD Kintex™ 7 FPGA



AMD Kintex™ 7 FPGAs balance cost and performance with high DSP integration, 28 nm process, and support for PCIe® Gen3 and 10G Ethernet.

AMD Virtex™ 7 FPGA VC709 Connectivity Kit



The VC709 kit offers 40Gb/s bandwidth with PCIe® Gen3, 10GBase-R, DMA, and AXI for high-bandwidth and high-performance applications.

AMD Kintex™ UltraScale+™ FPGA KCU116 Evaluation Kit



The KCU116 kit supports 28Gbps transceivers and offers excellent power efficiency and performance.

AMD Spartan™ 7 SP701 FPGA Evaluation Kit



The SP701 kit provides performance and flexibility for industrial, vision, and automotive applications, featuring 102K logic cells and flexible expansion.

AMD Vitis™ Model Composer



EF-MATSIM-ADDON enables model-based FPGA design using MathWorks MATLAB® and Simulink®, providing a streamlined experience via the AMD Vivado™ and Vitis™ development environments.

AMD Vivado™ Design Suite



The AMD Vivado™ design suite enhances productivity in design and implementation for AMD UltraScale™, Zynq™, and 7 series devices.

SDSoC Development Environment



SDSoC provides a C/C++ based workflow for embedded system development, accelerating application development with simplified platform creation and hardware integration.



DEVELOPMENT PLATFORMS

NXP SEMICONDUCTORS

A leading provider of solutions in automotive, industrial, IoT, mobile, and communication markets. Their "Brighter Together" approach combines advanced tech and innovative people to create intelligent, connected systems.

DEVELOPMENT PLATFORMS

FRDM Development Platforms for MCX, Kinetis and i.MX MCUs and MPUs



NXP's Freedom development platforms are low-cost, compact, and versatile platforms for prototyping and developing applications using NXP's MCX, Kinetis and i.MX MCUs and MPUs. They are designed for rapid prototyping and feature an industry-standard form factor, making them easy to use with various expansion boards.

FRDM i.MX 93 Edge-AI Dev Board with ML Acceleration



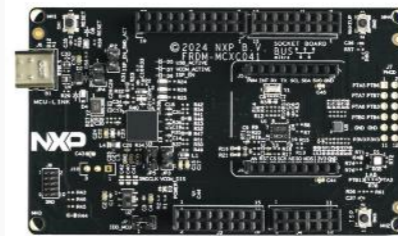
Edge-ready development platform featuring i.MX93 applications processor, IW612 Tri-Radio module (Wi-Fi, BLE, 802.15.4), AI/ML acceleration, and energy-efficient architecture for industrial IoT.

MCX A Series: Versatile Low-Power Cortex-M33 MCUs



General-purpose Cortex-M33 MCU family offering flexible scalability, ultra-low-power operation, and enhanced digital and analog peripherals for broad embedded applications.

MCX C Series: Cost-Optimized Cortex-M0+ MCUs for Basic Control



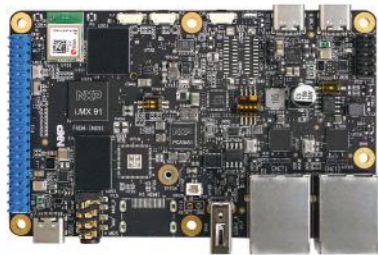
Cost-effective Cortex-M0+ based MCUs operating up to 48 MHz with integrated USB, LCD segment drivers, and low power consumption, ideal for display and basic embedded applications.

MCX W Series: Multiprotocol Wireless MCUs with Matter & BLE



Wireless MCU family built on Cortex-M33 with multiprotocol support (Matter™, Thread®, BLE, Zigbee®), featuring FRDM-MCXW71 Freedom platform compatibility and pin-compatible options.

FRDM i.MX 91 Dev Board with Tri-Radio for IIoT Connectivity



Low-cost development board for the i.MX 91 applications processor with integrated IW610 Tri-Radio module (Wi-Fi 6, Bluetooth LE 5.4, 802.15.4), targeting Industrial IoT and connected embedded systems.

i.MX 8M Plus EVK for Multimedia & Machine Learning



Advanced EVK supporting i.MX 8M Plus Quad/Dual application processors, enabling ML inference, computer vision, voice interfaces, multimedia, and wireless communication with integrated Wi-Fi/BT.

MCX N Series: High-Performance Cortex-M33 MCUs for Real-Time Apps



High-performance Arm Cortex-M33 microcontrollers designed for real-time applications, featuring low-power modes, scalable memory, intelligent peripherals, and hardware accelerators for compute efficiency.

LPCxpresso55S69 MCU Dev Board with Advanced Debugging Tools



Development platform for LPC5500 series Cortex-M33 MCUs, featuring a high-speed USB debug probe, support for CMSIS-DSP, and optional SEGGER J-Link LITE firmware for advanced debugging and prototyping.

MCSPTR2A5775E ASIL D Motor Control Kit for Automotive/Industrial



ASIL D-compliant motor control reference platform with eTPU-based PWM, FOC, and RDC offloading, designed for efficient electric motor control in automotive and industrial applications.

S32K3 Safety-Certified MCUs for Automotive Control Systems



Automotive-grade Cortex-M7 MCUs with single, dual, and lockstep cores, designed to meet ISO 26262 ASIL D safety standards, offering rich automotive peripherals and advanced security features.

RENESAS
ELECTRONICS

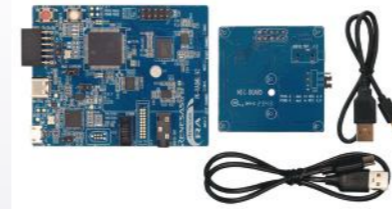
Offers comprehensive semiconductor solutions with a focus on embedded processing, analog, power, and connectivity. Renesas provides scalable, system-level technologies across automotive, industrial, IoT, and infrastructure sectors.

RA8 Voice UI Dev Board



Voice user interface development kit based on RA8M1 MCU, supporting ML/AI-based endpoint voice processing for smart home, automation, and portable electronics applications.

RA6M3 AI Vision & Sensor Fusion Dev Board



AI/ML-enabled hardware platform built on RA6M3 MCU, designed for multimodal (vision, audio, sensors) inference and real-time edge analytics in a compact, developer-friendly form.

RA4L1 32-bit MCUs with LCD & Security



32-bit MCUs with TrustZone®, LCD controller, low voltage operation, and advanced security for low-power, secure embedded systems.

RA0E2 Basic Low-Power Entry MCUs



Cost-effective MCUs with 32MHz CPU, 128KB flash, 16KB SRAM, and -40 to 125°C range, ideal for basic control and low-power designs.

RA2L2 USB-Enabled Entry MCUs



48MHz Cortex-M23 MCUs with 128KB flash, USB Full-Speed, CAN, I3C, low-power UART, ideal for general-purpose embedded USB devices.

RISC-V Fast Prototyping Board with Onboard Debug



Prototyping platform for R9A02G021 RISC-V MCU, featuring integrated SEGGER J-Link emulator for fast application development without external debugging tools.

RZ/T2H Real-Time Industrial Control MPU Board



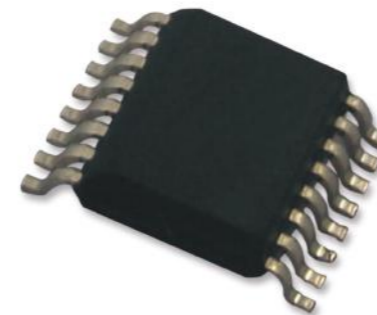
Comprehensive development kit for RZ/T2H MPU, integrating LPDDR4, Gigabit Ethernet PHY, and non-volatile memory, optimized for deterministic real-time industrial control systems.

RA4L1 Analog & Digital Dev Platform



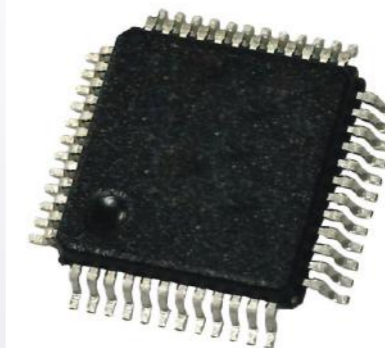
Full-featured evaluation platform for RA4L1 MCU group, supporting Flexible Software Package (FSP), e2 studio IDE, and a broad range of analog and digital application development.

RL78/G11 Ultra-Low-Pin Low Power MCUs



Tiny-package MCUs with 16KB flash, rich analog I/O, smart DMA, and 100µA@1MHz operation. Great for compact, battery-powered devices.

RL78/G13 Low Power, High Function MCUs



Energy-efficient MCUs with A/D, data flash, and safety features meeting IEC/UL 60730. Ideal for home appliances and industrial systems.

RL78/L13 LCD MCUs for Appliances



LCD driver MCUs with ultra-low current modes and three voltage options, perfect for displays in low-power household electronics.



DEVELOPMENT PLATFORMS

DEVELOPMENT PLATFORMS

DEBUGGER/PROGRAMMER

MCU FAMILY

ESD PROTECTION IC

SENSOR

COMMUNICATION IC

ST MICROELECTRONICS

A global semiconductor company delivering microchips embedded in innovations for a smarter, greener, and more sustainable future. These technologies are used in electric cars, smartphones, appliances, and factory machines.

STM32H750B-DK
Cortex-M7 Discovery Kit



Discovery kit with STM32H750XB MCU, featuring an Arm Cortex-M7 core. Includes STLINK-V3E, USB, Ethernet, and LCD for high-performance application prototyping. Ideal for IoT and industrial use.

STM32MP157A-DK1
Discovery Kit



Discovery kit with STM32MP157A MPU, leveraging OpenSTLinux and STM32CubeMP1. Features USB, Ethernet, HDMI, and GPIO expansion for ARDUINO and Raspberry Pi shields. Suits multimedia and industrial apps.

STEVAL-STWINBX1



The STWIN.box is a sensor rich reference platform with wireless connectivity, targeting industrial-grade condition monitoring, vibration analysis, and predictive maintenance in smart factories and edge AI.

EVLMG4L-IBCKFL Lighting
Eval Board



Evaluation board for high-power LED drivers, capable of operating from a high-voltage DC source with dimmable constant current control for precision lighting applications.

STM8 & STM32 Debug and
Programming Probe



Modular and stand-alone debugging/programming probe for STM8/STM32, supporting SWIM, JTAG, and SWD interfaces with fast flashing and virtual COM port capabilities.

NUCLEO-F767ZI Nucleo-144
Board



Nucleo-144 board with STM32F767ZI MCU, featuring a high-performance Arm Cortex-M7 core. Offers STLINK-V3E, Ethernet, USB, and extensive GPIO for advanced prototyping and IoT applications.

STM32L562E-DK Discovery
Kit



Discovery kit with STM32L562QE MCU, an ultra-low-power Arm Cortex-M33 core. Includes STLINK-V3E, USB, sensors, and expansion connectors for IoT and energy-efficient prototyping.

STM32WBA65I-DK1
Discovery Kit



Evaluation and demo kit for the STM32WBA65RIV7 with Arm® Cortex®-M33 core, Arm TrustZone®, flash, SRAM, and full set of smart analog and digital peripherals for secure wireless applications.

STM32U3 Ultra Low Power
MCUs



The STM32U385xx devices are ultra low-power microcontrollers based on the high-performance Arm® Cortex®-M33 32-bit RISC core.

STM32WB05xN Wireless
MCUs



Bluetooth® Low Energy 5.4 network coprocessor built on ST's 2.4 GHz RF IP, delivering ultra-low-power wireless performance for embedded BLE connectivity with extended battery life.

STM32F103 MCU Family



High-density performance line of Cortex-M3 MCUs operating up to 72 MHz, with integrated flash, SRAM, DMA, and rich peripheral support, optimized for low-power embedded control applications.

STM32N6570-DK



Development kit for STM32N6570H3Q Cortex-M55 MCUs, integrating ST Neural-ART Accelerator, H.264 encoder, NeoChrom 2.5D GPU, and 4.2 MB contiguous SRAM for advanced edge AI inference.

STM32 Nucleo-64 Board



Cost-efficient prototyping board supporting STM32 MCUs with Arduino™ and ST morpho connectors, offering full access to MCU I/Os and compatibility with mbed OS and STM32Cube ecosystem.

STM32F4 Discovery Kit



Discovery kit for STM32F407 Cortex-M4 MCUs tailored for audio applications, includes ST-LINK/V2 debug interface and onboard audio peripherals for quick development cycles.

USBLC6-2SC6 / USBLC6-2P6



Low-capacitance, monolithic ESD protection devices designed for high-speed data lines (USB 2.0, HDMI, Ethernet), ensuring signal integrity and robust protection from electrostatic discharge.

LIS2DH12 3-Axis
Accelerometer

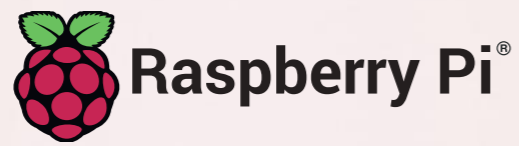


Ultra-low-power, high-performance 3-axis MEMS accelerometer with embedded FIFO, motion detection, and support for I2C/SPI digital interfaces; ideal for wearable and portable devices.

ST3485EB/EC/EI/EIV
Transceiver



Robust ±15kV ESD-protected RS-485/RS-422 transceiver in half-duplex, 3.3V configuration, suited for industrial automation and robust serial communication in harsh environments.



RASPERRY PI 5

RASPERRY PI 5: HIGH-PERFORMANCE SBC (2GB-16GB RAM)

Raspberry Pi 5 with 2.4GHz BCM2712, quad-core Cortex-A76, VideoCore VII GPU. Get Superior performance for embedded, edge AI, and rapid prototyping. Available in 2-16GB RAM configurations.



Compute Module 5



Raspberry Pi Compute Module 5 & Dev Kit (2GB-16GB RAM)

Compute Module 5 (CM5) SoM with 2.4GHz Cortex-A76, dual HDMI, PCIe, optional wireless. With 2-16GB RAM and eMMC Flash options, optimized for compact high performance embedded applications.

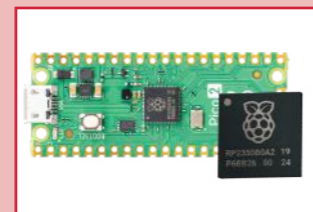
Compute Module 4



Raspberry Pi Compute Module 4: Compact SoM (2GB-16GB RAM)

Compute Module 4 (CM4) with Cortex-A72, dual HDMI, PCIe, optional wireless. With 2GB-6GB RAM and eMMC Flash options, optimized for compact embedded high performance applications.

Pico Family



Raspberry Pi Pico Family: Next-Gen Microcontrollers

The Raspberry Pi Pico family, powered by RP2040 or RP2350 MCUs, features dual-core ARM Cortex-M0+ processors, up to 264KB SRAM, and 2MB Flash. Compact and energy-efficient, perfect for real-time IoT, embedded applications.

Raspberry Pi 500



Raspberry Pi 500: Compact All-in-One PC

The Raspberry Pi 500 integrates a 2.4GHz quad-core ARM Cortex-A76 processor into a sleek keyboard form factor, delivering a powerful, compact PC for developers, educators, and engineers.

AI HAT+

Raspberry Pi AI HAT: High-Performance AI Acceleration



The Raspberry Pi AI HAT, equipped with a Hailo-8/8L accelerator (13-26 TOPS), ideal for edge AI, object detection, vision tasks with Raspberry Pi.

AI Camera

Raspberry Pi AI Camera: Intelligent Vision Module



The Raspberry Pi AI Camera, featuring a 12MP Sony IMX500 sensor with onboard AI inferencing, enables smart vision applications like object recognition without external accelerators.

Touchscreen Display

Raspberry Pi Touch Display 2: 7" Interactive Touchscreen



The Raspberry Pi Touch Display 2, a 7" 720x1280 touchscreen, 5-point touch and easy GPIO/DSI integration. Perfect for kiosks, tablets, and HMI dashboards.

Storages & OS

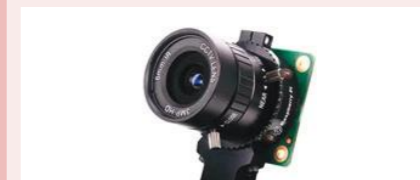
Raspberry Pi OS & Software Ecosystem



Debian-based Pi OS for dev, education, media. Install via Imager or SD cards, supports multiple OS.

HD Camera

Raspberry Pi Camera Module 3: Advanced Imaging



The Raspberry Pi Camera Module 3, with a 12MP IMX708 sensor, full HD for surveillance, robotics, vision projects.

M.2 HAT PCIe

Raspberry Pi M.2 HAT: High-Speed PCIe Expansion



M.2 HAT for Pi 5, supports NVMe SSDs, AI accelerators via PCIe 2.0, up to 500MB/s for storage, AI.

POE HAT+

Raspberry Pi PoE+ HAT: Simplified Power Delivery



PoE+ HAT powers Pi via Ethernet, ideal for remote IoT, industrial setups with PoE+ networks.

Monitor

Raspberry Pi 15.6" Full HD Monitor: Versatile Display



15.6" FHD Monitor with speakers, VESA, adjustable stand for Pi desktops, embedded projects.

19" Rack Solutions

Pi-Box Pro 5 & 19" Rack Mount: Industrial Pi Enclosures



Pi-Box Pro 5, 19" Rack for Pi 5, rugged with HDMI extenders, acrylic panel for industrial, server use.

Power Supply

Raspberry Pi 27W USB-C Power Supply



27W USB-C Power for Pi 5, supports HDDs, SSDs via USB-A, reliable for embedded, industrial use.

HDMI & USB Cables

Raspberry Pi Cables: High-Quality Connectivity



Raspberry Pi's cable lineup includes shielded HDMI (4K@60Hz), micro/mini HDMI, USB OTG cables for reliable Pi connectivity.

Cases & Enclosures

Raspberry Pi Cases: Durable ABS & Metal Enclosures



Raspberry Pi ABS and metal cases provide robust protection, with cooling, GPIO, camera mounts for industrial, IoT, prototyping durability.

LITTELFUSE

A diversified industrial tech company offering semiconductors, switches, sensors, and circuit protection products. It enables safer, more connected and sustainable systems across power electronics and industrial automation.

150 Series In-Line Fuseholders for Harness Assembly 



In-line fuse holders for wire harness assemblies or non-mountable surfaces. Rated for 20 amperes at 600 V.

313/5 Series Slo-Blo® Cartridge Fuses (3AG) 



3AG Slo-Blo® fuses for reliable, cost-effective circuit protection. Conform to UL/CSA/NMX 248-1 and UL/CSA/NMX 248-14 standards.

TPSMB-L Series EV Battery TVS Diodes 



Low-clamping voltage TVS diodes protect Analog Front End chip (AFE/BMIC) of electric vehicle Battery Management Systems from overvoltage events.

High Voltage XPT™ IGBT Modules for Fast Switching 



Thin-wafer XPT™ IGBTs with reduced thermal resistance, low tail current, low energy loss, and high-speed switching capability.

ATO®/MINI® Specialty Diodes for Automotive Systems 



ATO® and MINI® automotive diodes ensure unidirectional current flow. Rated at 1A with high peak inverse voltage to prevent backflow.

POWR-GARD® Multi-Class Industrial Fuse Blocks 



Industrial fuse blocks for superior wiring protection. Support Class CC/CD, G, H/K5, J, R, T, and Midget fuse sizes.

312/8 Series Fast-Acting Fuses (3AG) 



3AG Fast-Acting fuses for reliable, cost-effective circuit protection across a broad range of applications.

MICRO™ 273 Compact Radial/Plug-in Fuses 





Compact fuses in plug-in or radial lead styles with ampere ratings from 0.002A to 5A for various design needs.

Polar™ MOSFETs for High-Efficiency Switching 



Standard power MOSFETs with low on-state resistance and low gate charge Qg for efficient switching at all frequencies.

Discrete N-Channel MOSFETs for High-Voltage Circuits 



High-voltage N-Channel standard MOSFETs for power switching in high-voltage power supplies, capacitor discharge circuits, pulse circuits, and current regulators.

Magnetic Actuators for Sensors & Automation 




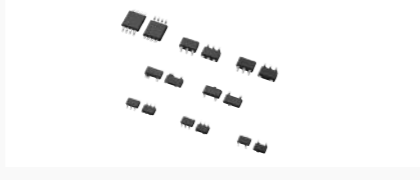
AlNiCo, ceramic (ferrite), and NdFeBo magnets in cylindrical, flange, rectangular, and threaded barrel configurations for sensor mating.

SMJA Series Ultra-Fast TVS Diodes 




Protects sensitive electronics from lightning-induced voltage transients. Features a fast response time of less than 1.0ps from 0 Volts to V(BR).

SP05 Series Surface-Mount TVS Arrays (5VDC) 



Surface-mount arrays suppress ESD and transient overvoltage events. Protect sensitive digital or analog input circuits on data, signal, or control lines up to 5VDC.

CG10 Series High-Surge Gas Discharge Tubes (GDTs) 



Reliable GDTs with high surge capability in a small size. Gas-filled, rugged ceramic-metal construction ideal for board-level protection in adverse environments.

AeroSplice® MIL-Qualified Wire-to-Wire Connectors 



Wire-to-wire solutions to streamline and standardize connections in aviation and defense. Meet MIL-DTL-24308 requirements.

KSC XA Series Soft-Feedback Tactile Switches (IP67) 



IP67-rated, 4.9mm high momentary tactile switches with ultra-soft feedback. Feature a hard actuator and extended cage for reliability.

KSC2 Series Compact Sealed SPDT Switches 



SPDT tactile switches with Electrical Height specification for unmatched functionality in a compact, space-saving design.

SENSORS

RESISTORS

INDUCTORS

CAPACITORS

PANASONIC

A global leader in high-quality electronic components and modules. Their broad portfolio includes passive components, sensors, relays, and wireless solutions for markets like automotive, industrial automation, and consumer electronics.

EWTSSG 6-in-1 MEMS Sensor Module



6-in-1 MEMS sensor integrates accelerometer, gyro, temp, magnetometer, pressure, and humidity for 6DoF data. Ideal for ADAS and autonomous driving systems.

Bluetooth 5.0 Low Energy Module



Bluetooth LE modules offer 3.2mA Rx, 150m+ range, and BLE 5.0. Compact, FCC/CE-certified, -40°C to +85°C, ideal for IoT and smart home devices.

Leaded Aluminum Electrolytics Capacitors



High-performance leaded aluminum capacitors offer low ESR, 6.3-450V, and up to 10,000h life. Ideal for demanding power supply, automotive, and industrial applications with reliable performance.

FN Series Miniature Low-ESR Electrolytics Capacitors



FN series capacitors deliver low ESR, large capacitance, and compact sizes. With 20% more capacity than competitors, they're perfect for miniaturized AV, home, and communication electronics.

Low-ESR Long-Life Electrolytics Capacitors



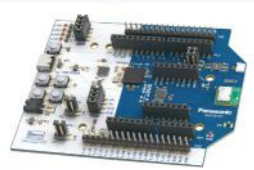
Low ESR capacitors provide up to 100V, 7,000h life, and high ripple current in compact sizes. With anti-vibration options, they excel in power supplies and industrial applications.

High-Temp Electrolytics Capacitors



High-temp capacitors ensure reliability at 125°C with low ESR and high ripple current. Ideal for power supply and industrial automation in harsh environments.

RF/Wireless Development Kits



RF/Wireless kits support Bluetooth/Sub-GHz/Zigbee, 1µA sleep, and FCC-certified modules. Enable rapid IoT prototyping for smart home and healthcare.

ERA Ultra-Precision Thin-Film Resistors



Thin-film resistors with 0.05% tolerance, 10ppm TCR, <0.1% drift in harsh conditions. Ideal for precision medical, automotive, and industrial environments.

ERJ High-Power & Specialty Resistor Family



High-power thick-film resistors with anti-sulfur, 175°C rating, low-ohm sensing, surge, and high-temp options for auto, industrial, and harsh-environment designs.

Hybrid Aluminum-Poly Capacitors



Hybrid capacitors combine high ripple (up to 6.1A), 25-80V, and 150°C performance. AEC-Q200 compliant with anti-vibration, perfect for automotive ADAS and industrial uses.

ZL Series Compact Hybrid Capacitors



ZL series hybrids offer 47-680µF in compact ø5x5.8 to ø10x10.2mm sizes, with 4000h at 125/135°C. AEC-Q200 compliant, ideal for high-ripple automotive applications.

OS-CON SXE/SXV Polymer Capacitors



OS-CON SXE/SXV capacitors provide 63-100V, high capacitance, and ultra-low ESR. Perfect for 48V line smoothing in servers and base stations, boosting efficiency.

ZV Series High-Ripple Hybrid Capacitors




ZV series hybrids, AEC-Q200 compliant, offer 3.3-4.6Arms ripple and 12mΩ ESR in compact 8-10mm sizes. Ideal for high-performance automotive and industrial applications.

ETQP Automotive Metal-Composite Power Choke Coils




ETQP power inductors use metal composite for high heat resistance and low loss. Ideal for automotive DC/DC converters and industrial applications.

LP/LE Low-Profile Metal-Core Inductors



LP/LE inductors offer low-profile, cost-effective 0.33-100µH in 5x5mm to 10x10mm sizes. Metal composite cores ensure low DCR for automotive uses.

High-Performance Metal-Composite Inductors



High Performance inductors deliver high current, low DCR, and -40°C to +150°C stability. Ideal for automotive ECUs, ADAS, and industrial automation.

POSCAP Low-ESR Polymer Tantalum Capacitors



POSCAP capacitors feature low ESR (5mΩ), compact 3.5x2.8mm to 7.3x4.3mm sizes, and high-frequency stability. Ideal for space-constrained digital and automotive circuits.

OS-CON Polymer Al Capacitors



OS-CON capacitors deliver 7.5A ripple, 2.5-100V, and 20,000h at 105°C. Perfect for power supplies, AI servers, base stations, and robotics applications.

SP-Cap Ultra-Low 3 mΩ ESR Polymer Capacitors



SP-Cap capacitors offer ultra-low 3mΩ ESR, 2-6.3V, and 135°C resistance in compact sizes. Ideal for data centers, edge AI, and MLCC replacement.

Automotive DC-Link Film Capacitors (ECWFJ/FG, EZPV)



ECWFJ/ECWFG/EZPV film capacitors handle 1300VDC, 1-110µF, and 125°C. Compact for DC link, solar inverters, and EV charging applications.



The DNA of tech.

DEVELOPMENT KITS | SENSORS
OPTOCOUPLERS

THE EDGE
ACCELERATE YOUR INNOVATION

RESISTOR | CAPACITORS
POWER MANAGEMENT | POWER INDUCTORS
POWER SEMICONDUCTORS | CIRCUIT PROTECTION

VISHAY

One of the world's largest makers of discrete semiconductors and passive components, including MOSFETs, ICs, resistors, and capacitors. Vishay supports high-performance, energy-efficient designs for diverse global industries.

16-bit Ambient-Light Sensor Dev Kit



Ambient light sensors offer high accuracy, low power consumption, and compact design. With 16-bit resolution, I²C interface, and excellent temperature compensation.

WSKx Kelvin Metal-Strip Current-Sense (0.2 mΩ)



High-accuracy current sensing with 4-terminal resistors offer ultra-low 0.2 mΩ resistance, <20 ppm/°C TCR, and high accuracy for EVs, BMS, and industrial power current sensing.

TNPW ±0.1 % Ultra-Stable Thin-Film Resistors



Ultra-stable thin-film resistors with ±0.1% tolerance, ±25 ppm/°C TCR, and <0.1% drift for automotive, medical, and test equipment.

T51 vPolyTan™ Low-ESR Polymer Chips (40–120 mΩ)



Low-ESR (40–120 mΩ) polymer chip caps support up to 2.37 A ripple and +125°C operation for ADAS, infotainment, and POL power supplies.

MKP1848Se Low-Profile DC-Link Film Caps (27 A Ripple)



MKP1848Se DC-Link film capacitor offers low-profile (12–24 mm) design, high ripple current (up to 27 A), low ESR (down to 3 mΩ), and AEC-Q200 qualification. Ideal for EV/PHEV converters, onboard chargers, and motor drives.

SensorXplorer & Power Reference Boards



SensorXplorer and power reference boards with USB-to-I²C, optoelectronics, support high-power and sensor eval for IoT, automotive, industrial, and consumer apps.

48 -12 V Bidirectional DC/DC Dev Board (83 A / 21 A)



Bidirectional DC/DC dev board (48↔12 V) with 2-phase interleaving, 185 kHz switching, and full protection. Delivers up to 83 A or 21 A. Ideal for auto, industrial, telecom.

Ultra-Low RDS(on) Load-Switch Dev Kit (20 V)



Dev kit uses ultra-low RDS(on) MOSFETs for efficient high-side switching up to 20 V. Ideal for battery-powered, industrial, and telecom systems.

VCNT2030 0.3 mm-Gap VCSEL Reflective Sensor



Reflective sensor with 0.3 mm gap, 870 nm VCSEL, and >30% efficiency. Offers consistent signals for compact encoders, printers, and optical proximity sensing.

F340 THB-IIIB EMI Film Capacitors (AEC-Q200)



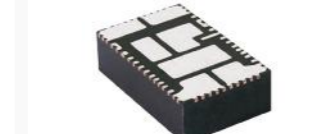
F340 Series THB Grade IIIB interference suppression film capacitors feature self-healing MKP construction and AEC-Q200 qualification, ensuring reliable EMI filtering in EVs, industrial drives, and renewable energy systems.

AY1 / AY2 Automotive AC-Safety Capacitors



Automotive-grade AC capacitors with AEC-Q200 for EMI suppression and coupling in PHEV/EV chargers and DC/DC converters.

microBRICK® 20 A Step-Down Module (4.5–14 V)



Compact DC/DC module delivers up to 20 A with 4.5–14 V input, low ripple, and great thermal performance for telecom, datacom, and industrial use.

IFSC-2020DE Semi-Shielded 6 × 6 × 4.5 mm Inductor



IFSC-2020DE-01 Semi-Shielded SMD Power Inductors feature a semi-shielded, wirewound ferrite construction and come in a 6.0mm x 6.0mm x 4.5mm SMD package.

VEMD8082 High-Sensitivity PIN Photodiode (0.62 A/W)



VEMD8082 PIN photodiode offers high sensitivity (0.62 A/W at 950 nm), fast response, low capacitance (17 pF), and compact surface-mount design. Ideal for optical sensors, barcode scanners, and medical devices.

NTCALUG Lug-Mount NTC Thermistors (-55 °C to +150 °C)



Lug-mount NTC thermistors offer -55°C to +150°C sensing, 4.7kΩ–100kΩ, fast response, and 1500 VAC insulation. Ideal for EVs, HVAC, and thermal control.

NTCLE350 185 °C AEC-Q200 NTC Thermistors



NTCLE350 thermistors offer precise, fast-response temperature sensing up to 185°C, with ±1% R25 tolerance, 3435–3984 K B25/85, and AEC-Q200 qualification.

10 MBd / 15 kV/μs High-Speed Optocoupler



10 MBd optocouplers offer 15 kV/μs CMTI, 5000 V RMS isolation, 2.7–5.5 V operation, and 5 mA supply current. With open-drain output and LVTTTL/LVCMOS compatibility, they suit MCU interfaces, ADC/DAC, and automation.

650 V Gen-3 SiC Schottky Diode (175 °C)



SiC Schottky diodes offer ultra-fast switching, low VF (1.36 V), and QC (56 nC), ensuring high efficiency and reliability up to 175°C. Ideal for solar inverters, EV chargers, UPS, and telecom power supplies.

1200 V / 250 A SOT-227 Trench IGBT Module



SOT-227 IGBT delivers 1200 V, 250 A with trench/field stop technology, low switching losses, 10 μs short-circuit withstand, HEXFRED® diodes, and 150°C TJ. Features easy paralleling and positive temperature coefficient. Ideal for UPS, SMPS, welding.

SiP32433/34 23 V / 10 A Smart eFuses



SiP32433/SiP32434 eFuses offer 2.5 V–23 V input, 6 A/10 A current limit, 55 mΩ, and fast short-circuit response. With reverse blocking, soft start, and latch/autoretry modes, they are ideal for SSDs, HDDs, USB hubs, and telecom systems.

48 V / 100 A Resettable eFuse (<2 μs Trip)



48 V, 100 A eFuse ensures ultra-fast (<2 μs) overcurrent protection, features pre-charge, continuous current monitoring, and operates at full load with <14 W losses. Ideal for EVs, BMS, solar, and industrial systems.

CAPACITORS

CAPACITORS | INDUCTORS | RESISTORS
ANTENNAS | EMI SUPPRESSION
POWER MANAGEMENT

/ YAGEO

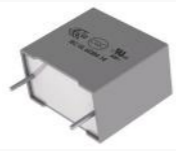
Provides a comprehensive portfolio of electronic components including resistors, capacitors, inductors, relays, antennas, sensors, and circuit protection for consumer electronics, industrial, IoT, and automotive markets.

C4AQ-P 450-1100 V Long-Life Film Capacitors (+125 °C)



Engineered for extended durability at +125°C, these capacitors deliver a capacitance range of 1µF to 210µF and a voltage range of 450VDC to 1100VDC, ideal for demanding applications requiring robust performance.

R41D UL94 V-0 Flame-Retardant Film Capacitors



Constructed with metallized polypropylene film and encapsulated in self-extinguishing resin, these capacitors are housed in a UL 94 V-0 compliant box, ensuring safety and reliability in critical circuits.

KONNEKT™ TLPS COG High-Density Capacitors



Utilizing innovative KONNEKT™ technology with Transient Liquid Phase Sintering (TLPS), these COG capacitors enable high-efficiency, high-density power solutions for advanced surface-mount applications.

T598 KO-CAP® Ultra-Low-ESR Organic Capacitors



These Solid electrolytic capacitors offer ultra-low ESR, high capacitance at high frequencies, combining benefits of ceramic, aluminum, and tantalum types.

SCF-XV Nanocrystalline Automotive EMI Chokes



Designed for automotive and harsh industrial environments, these single-phase chokes use nanocrystalline metal or Mn-Zn ferrite cores, offering versatile noise suppression across a wide range of frequencies.

NT Moisture & Sulfur-Resistant Thin-Film Resistors



Supporting compact designs, these inductors offer low inductance deviation, high precision, and elevated Q-factor for efficient impedance matching in RF and IF circuits.

AC Series AEC-Q200 150 °C Ceramic MLCCs



AEC-Q200 qualified, these SMD/SMT MLCCs operate reliably from -55°C to 150°C, withstanding 1,000 hours at 85°C/85% RH, ensuring durability in automotive applications.

FT-CAP Flex-Term Automotive MLCCs (VW 80808)



Automotive-grade multilayer ceramic capacitors with flexible termination, designed for reliable performance in harsh environments, meeting VW 80808 standards.

T581 KO-CAP® MIL-PRF-32700 Polymer Capacitors



KO-CAP® electrolytic capacitors with conductive polymer cathode, offering low ESR, high ripple current, and long operational life, compliant with MILPRF-32700 (levels X, Y, Z).

A785 High-Temp Automotive Polymer Capacitors (+150 °C)



AEC-Q200 qualified, these capacitors offer high ripple current, vibration resistance, and a polarized all-welded design, tailored for demanding automotive applications.

RP Series AEC-Q200 Precision Thin-Film Resistors



AEC-Q200 qualified tantalum nitride thin-film chip resistors, offering high precision, stability, and resistance to moisture and sulfur for automotive-grade reliability.

BSPQ High-Q Mini RF Inductors



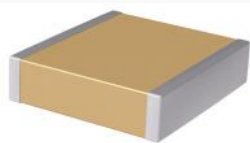
High-precision chip resistors crafted via thin film processes, these AEC-Q200 qualified components offer superior sulfur resistance, high stability, and Moisture Sensitivity Level (MSL) 1 for reliable performance.

W3961 4.5 dBi Flexible CBRS FPC Antennas



High-performance FPC antennas with a peak gain of 4.5 dBi and over 70% efficiency, designed for CBRS or C-band applications, with a bendable, foldable design for compact installations.

KC-LINK™ COG/NPO Fast-Switch Power Capacitors



Designed for fast-switching semiconductors, these COG/NPO BME capacitors support high voltages, temperatures, and frequencies, ideal for power converters, inverters, snubbers, and resonators.

CC Series Multi-Dielectric MLCCs (NPO/X5R/X7R/Y5V)



Available in NPO, X5R, X7R, and Y5V dielectrics, these MLCCs support standard EIA chip sizes, a wide capacitance range, and lead-free terminations, compatible with both reflow and wave soldering.

R58 Safety-Certified Polypropylene Capacitors (UL94 V-0)



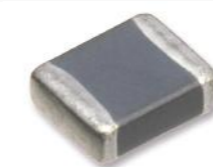
Built with metallized polypropylene film and encased in UL 94 V-0 self-extinguishing resin, these capacitors provide dependable performance in safety-critical applications.

A780 Hybrid Polymer SMD Capacitors (Low ESR)



Surface-mount conductive polymer hybrid capacitors housed in a cylindrical aluminum can with a high-quality rubber deck, featuring low ESR via PEDOT/PSS for exceptional electrical performance.

Wide-Band Ferrite Beads (10 Ω-2.2 kΩ, ≤6 A)



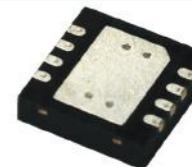
Optimized for 25MHz to >1GHz, these ferrite chip beads come in sizes from 0402 to 4532, offering 10Ω to 2200Ω impedance, 6A max DC current, and SMD/SMT or solder terminations for commercial and automotive use.

30 V Low-RDS(on) N-Channel MOSFETs



Featuring low on-resistance and high switching speed, these 30V N-channel MOSFETs are versatile components for a wide range of electrical and electronic systems.

Dual Power MOSFET Pair Devices



These dual power MOSFETs provide a reliable alternative for power semiconductor applications, delivering robust performance in compact designs.

/ AMPHENOL

A leading global designer and manufacturer of connectors, interconnect systems, antennas, sensors, and high-speed cables. It serves key markets including aerospace, defense, mobile devices, and communications infrastructure.

Telaire T6613/T6615 CO₂ Sensor Dev Kit



Development kit to evaluate T6613/T6615 CO₂ sensor performance and develop software/firmware for sensor communication.

Telaire AAS-LDS-UNO Multi-Sensor Eval Board



Evaluation board for air quality sensors, including SM-UART-04L PM2.5 Laser Dust Sensor, T9602 Temperature & Humidity Sensors, T6713 CO₂ Sensor, and other sensors.

SV Microwave Mini-D Multiport RF Assemblies



Multiport harnessed cable assemblies with rugged, lightweight aluminum housing for high-density test, measurement, military, and aerospace applications.

RP-SMA Reverse Polarity RF Cable Assemblies



Reverse polarity RF cable assemblies with excellent electrical properties, durability, and compatibility for telecommunications and IoT devices.

BarKlip Spring-Loaded Busbar Connectors



Busbar connectors for reliable power distribution with low insertion force. Spring-loaded design ensures consistent contact, thermal performance, and vibration resistance.

ATP Series High-Performance Sealed Connectors



IP68/69K-rated, high-performance thermoplastic connectors with superior environmental seals and seal retention for marine, heavy equipment, and automotive applications.

EcoMate Aquarius Waterproof Connectors



IP67/IP69K-rated waterproof connectors for indoor/outdoor applications. Lightweight, cost-effective sealed connectors.

EcoMate Fathom Lock Auto-Locking Connectors



IP68-rated waterproof connectors with auto-locking coupling for easy mating/unmating in solar energy, mining, rail, marine, and instrumentation applications.

ACS Microspace Miniature Automotive Connectors



Ultra-compact crimp-to-wire connectors for automotive and electric vehicles. Lightweight, durable, with low insertion force and excellent electrical properties.

ATM Automotive Power Contacts



Precision connector contacts for heavy-duty environments. Available in 4AWG to 30AWG, gold and tin plating, rated up to 25A.

ACS Mini Cool Edge Data Connectors



0.6mm connectors for high-speed data transmission in data centers and AI applications. Support low latency, high bandwidth, and signal integrity.

ARC Series Rugged Sealed Power Connectors



Heavy-duty, IP68/69-rated, environmentally sealed power connectors with robust locking mechanisms and excellent electrical performance for defense and industrial applications.

SMPM RF Cable Assemblies – 65 GHz Rated



High-frequency, micro-miniature cable assemblies with performance up to 65 GHz. Durable, lightweight, ideal for military and aerospace systems.

SMPM RF Adapters – Low VSWR Bullet Adapters



SMPM bullet adapters for reliable microwave connections with low VSWR and durability in MRI, quantum computing, radar, and GPS applications.

PCD MIL-DTL-24308 D-Subminiature Connectors



MIL-DTL-24308-qualified sub-miniature rack and panel connectors with polarized shells and high-density machined contacts for high reliability.

ACS ExtremePort High-Speed Military Connectors



Military-grade connectors with high-speed data transmission for defense, industrial, and outdoor communications systems under stress.

HV 38999 Circular MIL-Spec Power Connectors



MIL-spec circular connectors with high-conductivity alloys and high-current pin contacts. Reduce power loss, improve ampacity up to 25%, rated up to 250A.

WIRE-TO-BOARD CONNECTORS | PIN AND SOCKET CONNECTORS

AUTOMOTIVE CONNECTORS | HIGH-SPEED CONNECTORS

FFC/FPC CONNECTORS

POWER CONNECTORS | GROUNDING SOLUTIONS

HYBRID CONNECTORS | SEALED CONNECTORS | CABLE ASSEMBLIES

/ MOLEX

Delivers highly reliable interconnect solutions for mission-critical applications in aerospace, defense, medical, automotive, and industrial sectors. It also addresses needs in enterprise, education, and government systems.

Micro-Lock Plus High-Retention Connectors



High-performance interconnects optimized for space-constrained applications. Feature a positive locking mechanism, audible click for secure mating, and vibration protection.

PowerWize BMI Blind-Mate Panel/Busbar Connectors



Blind-mating panel-to-board/panel-to-busbar connectors with COEUR socket technology for low contact resistance, minimizing heat generation and enabling high current-carrying capacity.



PowerWize HV High-Density High-Current Connectors



3.40mm pitch interconnects for high power in small spaces. Feature two mechanically-keyed color options to prevent mismatching cable assemblies.



Pico-Lock 3.0 Low-Profile High-Current Connectors



Wire-to-board system with low profile, high-current carrying capability, and durable locking. Available in various pitch versions, ideal for space-saving applications with secure mating retention.

Mini-Spox 2.5mm Automotive-Grade Connectors



2.50mm wire-to-board connector system with electrical and mechanical reliability. High-temperature design meets automotive, consumer, and industrial requirements.

Sentrality Right-Angle Self-Aligning Connectors



Right-angle pin and socket interconnects supporting co-planar, offset-planar, and reverse-planar mating. Feature a ± 1.00 mm self-aligning socket for high electrical performance.

Flexible Ground Strap Jumpers (Flat & 90°)



Off-the-shelf grounding jumper solutions for safe high-power distribution. Available in flat-ended and 90° bend configurations.

MX-DaSH Power/Data Signal Hybrid Connectors



Data-signal hybrid connector combining power, ground, and high-speed data connections. Replaces multiple traditional connectors in vehicle applications.

Squba 3.6mm IP68 Sealed Wire-to-Wire Connectors



UL-approved, IP68-rated sealed wire-to-wire connectors. Deliver reliable power in space-constrained applications with color mechanically-keyed options for design flexibility.

HSAutoLink II High-Speed Vehicle Interconnects



Robust differential-pair connectivity solution for transportation applications. Supports high-speed signaling protocols with data rates up to 13.5 Gbps.

Mini Cool Edge (MCIO) PCIe Cable & Board Interconnects



Mini Cool Edge (MCIO) family with 4x, 8x, 16x, and 20x options. Supports high-speed data rates of 16, 32, and up to 64 Gbps. Cable assemblies meet PCIe standards in flexible configurations.

Easy-On FS19 FFC/FPC Connectors with Large Actuator



Tin-bismuth FFC/FPC connectors with a large actuator for easy operation. Designed to mate seamlessly with both eared and non-eared cables.

Premo-Flex Flexible PCB Cable Assemblies



Durable, extra-flexible PCB-connection solutions with custom and off-the-shelf flat flexible cable options. Supports high-speed low-voltage differential signal connectors.

MX64 USCAR-Compliant Sealed Cable Assemblies



Cable assemblies engineered for USCAR compliance, ideal for rugged automotive applications. Compact, IP67-rated matte seals support 18-22 AWG and ISO metric wires.

Micro-Fit 3.0 High-Current OTS Cable Assemblies



Cable assemblies for dependable signal or power delivery in space-constrained applications. Support a maximum current rating of 8.5A.



AUTHORIZED DISTRIBUTOR

DEVELOPMENT PLATFORMS

SENSORS

RESISTORS

THE EDGE
ACCELERATE YOUR INNOVATION

CONNECTORS

ANTENNAS

TE CONNECTIVITY

A global leader in connectivity and sensor solutions, serving industries like automotive, industrial equipment, data communications, aerospace, medical, oil & gas, and consumer electronics with an extensive, reliable product portfolio.

BLE Environmental Multi-Sensor Dev Kits



BLE kits combine pressure (300–1200mbar), humidity (0–100%RH), and temperature (–40°C to 125°C) sensing with ± 2 mbar, $\pm 3\%$ RH, $\pm 1^\circ\text{C}$ accuracy. I²C, low power, ideal for HVAC and weather station prototyping.

Precision Temp-Sensor Boards



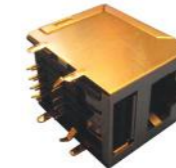
Temperature boards offer $\pm 0.1^\circ\text{C}$ accuracy (–5°C to 50°C), I²C interface, and 8.22ms conversion. Low power, 5V, ideal for HVAC, industrial control, and weather monitoring.

Compact HDMI 2.1 Connector



HDMI connectors with friction lock, 19-pin, 0.5A in 6.4x2.8mm. Secure, compact for mobile phones, action cameras, and small devices.

Single / Ganged / Stacked RJ45 Ethernet Jacks



RJ45 connectors offer single/ganged/stacked ports, high-speed data, and shielded options. Robust for networking, telecom, and industrial automation.

Board-Mount I/O Headers



I/O connectors with 1.27mm pitch, surface-mount/through-hole options, and robust contacts. Ideal for industrial, automotive, and audio applications.

Fast-Response Temp-Sensor Boards



Temperature boards provide $\pm 0.2^\circ\text{C}$ accuracy (–5°C to 50°C), I²C interface, and 43ms conversion. Low power, 5V, ideal for HVAC, industrial control, and weather monitoring.

FX29 Miniature Compression Load Cells



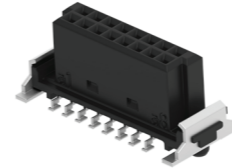
FX29 is a compact compression sensors offer high accuracy and millivolt, analog or digital outputs in a robust package. Ideal for medical, robotics, and automation applications.

High-Accuracy Digital Pressure Sensors



Compact pressure sensors deliver reliable measurements for medical, industrial, HVAC, and consumer electronics. High accuracy for precise pressure monitoring.

Dual-Row SMC High-Density Connectors



1.27mm SMC connectors offer dual-row, high-density BtB/WtB connectivity with flexible mating. Ideal for industrial, medical, and transportation systems.

Modular PCB Connectors



PCB connectors with 1.27–2.54mm pitch, multiple assembly types, and mount orientations. Reliable for telecom, computing, and automation applications.

Low-Profile FPC ZIF Connectors



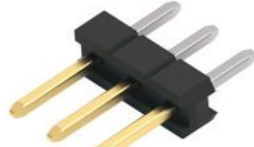
FPC connectors with 0.25–1.25mm pitch and low-profile design meet miniaturization needs. Ideal for consumer, automotive, and industrial devices.

High-Precision Digital Temp Sensors



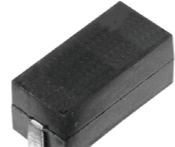
Digital temperature sensors ensure $\pm 0.1^\circ\text{C}$ accuracy and fast data transmission. Ideal for medical, industrial, HVAC, and consumer electronics thermal control.

New High-Performance Pin Headers



Up to 200 pins, 20A, –40°C to 150°C. Multiple mounts, sealed/unsealed, 0.63–3.0mm blades. Ideal for automotive, industrial, consumer electronics. Durable, reliable connectivity solutions.

1 W Kelvin Current-Sense Resistors (0.013 Ω)



SMD current sense resistors offer 1W, 0.013 Ω , 1% tolerance, and 50ppm/ $^\circ\text{C}$ TCR. Advanced overcoat for reliability in automotive and power systems.

IP68 Sealed Vehicle Power/Data Connectors



Vehicle connectors with IP68 sealing withstand extreme temperatures, vibration, and shock. Ideal for trucks, buses, and off-road vehicles.

Triple-Band 2.4 / 5 / 6 GHz Flex Antennas (Wi-Fi 6/6E)



Triple-band antennas support Wi-Fi 6/6E, Bluetooth, ZigBee (2.4–7.1GHz) with minimal keep-out zone. Compact, ideal for IoT, smart home, and industrial uses.

Multi-Band (2.4–7.125 GHz) Antenna Assemblies



Multi-band antennas cover 2.4–7.125GHz with high efficiency. Support Wi-Fi 6E, ideal for IoT, telecom, automotive, and complex wireless applications.

KEYSIGHT
TECHNOLOGIES

A leader in electronic design and test solutions, enabling advances in 5G/6G, quantum computing, IoT, and aerospace. Offers instruments and software for simulation, emulation, and AI-driven validation across the full development cycle.

HD3 Series MSO: High-Definition Signal Analyzer



Unleash precision with 14-bit ADC, 50µVRMS ultra-low noise, 200MHz-1GHz bandwidth. 2/4 channels, 10.1" HD touch display, 100Mpts memory, 3.2GS/s rate, Fault Hunter, zone triggering. MegaZoom 5 ASIC powers fast insights.

InfiniiVision 4000G X-Series Oscilloscope



Catch every glitch with 1M wfms/s update rate, 12.1" touch display. 2/4 channels, 200MHz-1.5GHz bandwidth, 4Mpts memory, 5GS/s rate, 12-bit ADC. Zone triggering, serial decode, histograms, Bode plots fuel deep analysis.

E36300 Series: 3-Output Lab Bench Power Supply



Power confidently with triple output, 200W, 6V-60V, 1A-10A, 0.01% regulation, low ripple. 4.3" LCD, 2/4-wire sense, LAN/USB, optional GPIB. Data logging, sequencing, overvoltage protection.

E36200 Series: High-Power Bench Power Supply



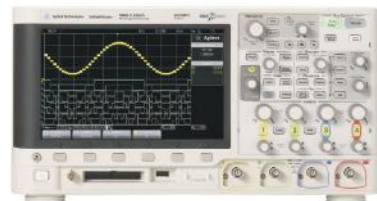
Dual/single output, 400W, 120V or 40A, autoranging. 4.3" LCD, 0.01% regulation, low ripple, 2/4-wire sense, LAN/USB, optional GPIB. Sequencing, data logging, overvoltage protection.

E36150 Series: Precision DC Lab Power Supply



800W single-channel, 60V/80A, autoranging, 3x peak power. 4.3" LCD, 0.01% regulation, low ripple, LAN/USB/GPIB. Scope View, AWG, data logging, overvoltage protection for versatile testing.

InfiniiVision 2000 X-Series Oscilloscope



Boost testing with 70MHz-200MHz bandwidth, 2/4 channels, 2GS/s rate, 1Mpts memory, 200k wfms/s. 8-bit ADC, training signals, PathWave BenchVue, segmented memory, advanced math. Perfect for entry-level innovation.

InfiniiVision 1000 X-Series Oscilloscope



Affordable brilliance: 50MHz-200MHz bandwidth, 2/4 channels, 2GS/s rate, 1Mpts memory, 200k wfms/s, 7" TFT LCD, 8-bit ADC. Includes Bode plots, mask testing, digital voltmeter for versatile testing.

DAQ970A Series: High-Channel DAQ System



Precision 6½-digit DAQ, 0.003% DCV accuracy, 450 ch/s scan, 1Mpts memory, 4.3" display. 3-slot mainframe, 14 input signals, 120 channels. LAN/USB, optional GPIB. BenchVue drives fast insights.

E36100B Series: Programmable DC Lab Power Supply



Compact 2U, 100V/5A, 0.01% accuracy, low ripple. LAN/USB, OLED display, overvoltage/current protection, low-current measurement, convection-cooled. Ideal for precise manual/automated tests.

N5700 Series: Industrial High-Power DC Power Supply



Robust 750W/1500W, 6V-600V, 1.3A-180A, 1U chassis, 0.01% accuracy. LAN/USB/GPIB, LXI-compliant, overvoltage/current protection, 76% efficiency, universal AC input.

N6700C Series: Modular DC Test Power Platform



Flexible 400W, 1U mainframe, 4 DC modules (20-500W), 0.01% accuracy. GPIB/LAN/USB, LXI-compliant, fast processing. Perfect for ATE, R&D, validation. Modules sold separately.

TEKTRONIX

Offers a wide range of test & measurement solutions including oscilloscopes, analyzers, generators, multimeters, and probes. Known for precision and innovation, Tektronix serves electronics, telecom, aerospace, and automotive sectors with real-time analysis and USB integration.

6 Series B MSO: High-Bandwidth R&D Oscilloscope



Tackle high-speed designs with 1GHz-10GHz bandwidth, ultra-low noise TEK061 ASICs, 15.6" HD touch display. 4/6/8 channels, 50GS/s sample rate, 250Mpts memory, 12-bit ADC (16-bit at 200MHz), optional 64 digital channels.

5 Series B MSO: Advanced Lab Oscilloscope



High-fidelity waveforms, multi-channel spectrum analysis, 15.6" HD touch display. 4/6/8 channels, 350MHz-2GHz bandwidth, 6.25GS/s sample rate, 62.5Mpts memory, 12-bit ADC, optional 64 digital channels.

2 Series MSO: Portable Touchscreen MSO



Compact, portable 2/4-channel scope, 70MHz-500MHz bandwidth, 10.1" WXGA touch display, 2.5GS/s sample rate, 10Mpts memory, optional 8hr battery, 16 digital channels, 50MHz waveform generator. VESA mount.

TBS2000B Series: Affordable Lab Oscilloscope with Wi-Fi



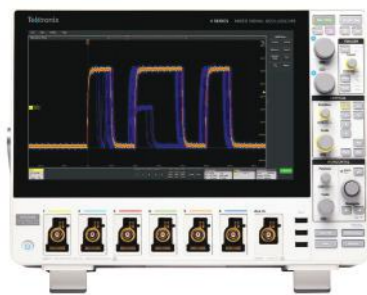
Affordable 2/4-channel scope, 50MHz-200MHz bandwidth, 9" WVGA display, 2GS/s sample rate, 5Mpts memory, 12-bit ADC, 32 measurements, Wi-Fi, TekVPI probes.

TBS1000C Series: Entry-Level Educational Oscilloscope



Reliable 2-channel scope for education/design. 50MHz-200MHz bandwidth, 7" WVGA display, 1GS/s sample rate, 20kpts memory, 32 automated measurements, dual FFT, 5-year warranty.

4 Series B MSO: Mid-Range Lab Workhorse



Fast, precise measurements with intuitive 13.3" HD touch UI. 4/6 channels, 200MHz-1.5GHz bandwidth, 6.25GS/s sample rate, 31.25Mpts memory, 12-bit ADC, optional 48 digital channels.

5 Series MSO: Low Profile High-Density Modular Digitizer



High-density 8 analog inputs, optional 64 digital channels in 3.5" 2U form factor. 12-bit ADC, 6.25GS/s sample rate, 125Mpts memory. Combine units for virtual instruments with TekScope PC software.

3 Series Mixed Domain Oscilloscopes



Largest 11.6" HD touch display, unmatched low-level signal accuracy, built-in true hardware spectrum analyzer for RF testing. 2/4 channels, 100MHz-1GHz bandwidth, 2.5-5GS/s sample rate, 10Mpts memory, 8-bit ADC, optional 16 digital channels.

DMM6500 6.5 Digit 15 Function Benctop Digital Multimeter



15 functions, 5" touch display, 25PPM DCV accuracy, 10pA-10A, 1mΩ-100MΩ, 1MS/s digitizer, 12-bit ADC, 7M reading memory. USB/LXI interfaces.

DAQ6510: Modular Data Acquisition & Logging System



Precision data acquisition, 5" touch display, 12 plug-in modules, up to 80 DUTs, 800 channels/s with solid-state relay. LAN/LXI, USB, optional GPIB/RS-232. KickStart software included.

2450 SMU: Precision Source Measure Unit



Versatile SMU, 5" touch GUI, 0.012% accuracy, 6½-digit resolution, 20mV/10nA ranges, 12-bit ADC, four-quadrant operation. Ideal for semiconductor, nano-scale testing.



Built to Improve Engineering Productivity

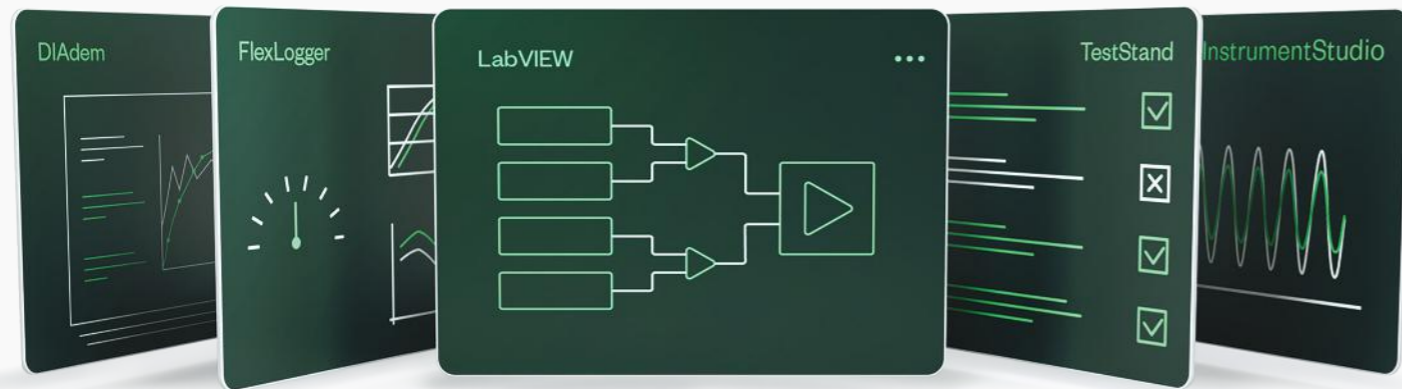
LabVIEW is a graphical programming environment that provides unique productivity accelerators for test system development, such as an intuitive approach to programming, connectivity to any instrument, and fully integrated user interfaces.

Which edition is right for my Project?

Base
Recommended for building simple test and measurement applications.

Full
Recommended for applications that require advanced analysis or signal processing.

Professional
Recommended for engineers who need tools for software engineering, code deployment, distribution, and reporting.



The LabVIEW+ Suite

Do More with the NI LabVIEW+ Suite

The LabVIEW+ Suite is a collection of LabVIEW, plus, DIAdem, TestStand, FlexLogger, and more NI Software.

The Suite saves engineers time by providing purpose-built tools for measurement, analysis, and test.



mioDAQ compact USB data acquisition device



mioDAQ delivers precision $\pm 10V$ data acquisition in a compact USB device. Ideal for validating electronics, building test systems, and automating measurements. Compatible with NI LabVIEW, Python, and C/C++ via APIs and example code. Includes free NI logging software. Simplifies testing with flexible software, reducing setup stress while ensuring accurate results.

FieldDAQ data acquisition for extreme conditions



FieldDAQ is built for extreme conditions, capturing high-quality sensor data directly in the field. With IP65/IP67 protection and a compact form factor, it mounts near sensors to minimize signal noise—eliminating the need for long, interference-prone cables. Ideal for evolving test needs, FieldDAQ delivers reliable, real-world data from remote test cells and demanding environments.

CompactDAQ Systems

Improve test coverage and meet requirements across any distance and in any environment with modular and flexible CompactDAQ modules.

CompactDAQ Measurement Bundles



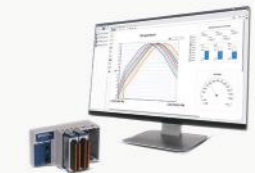
CompactDAQ bundles include chassis, modules, and accessories for quick, plug-and-play sensor measurements. Ideal for temperature, strain, and vibration. Fully LabVIEW-ready for fast setup and flexible data analysis.

cDAQ-SL1100 Strain & Load Bundle



High-speed, 24-bit strain measurements with NI-9237 and cDAQ-9171. Ideal for load, pressure, and torque sensors. Includes cables and connector blocks, ready for immediate use in your test setup.

cDAQ-T4202 32-Ch Temp Bundle



Easily capture temperature data with 32-channel NI cDAQ-T4202. Features built-in CJC and a compact, rugged design. Perfect for thermal testing on the benchtop or in the field.

PXI Chassis Controllers

The heart of any PXI based test system, these controllers provide in-chassis control of all operations of installed PXI devices.



PXIe-8822 - 2.4 GHz Quad-Core PXI Controller

Compact Core i3 PXI controller for control, DAQ & test.

PXIe-8842 - 2.6 GHz 6-Core PXI Controller

Fast PXI controller for high-speed DAQ & modular test.

PXIe-8862 - 2.6 GHz 8-Core PXI Controller

Core i7 power for PXI Express RF & data-heavy tasks.



Empowering wireless innovation



Fast, efficient, easy-to-implement, ultra-low-power wireless IoT solutions



LEARN MORE
nordicsemi.com



VALUE ADDED SERVICES

Our value chain management solutions and advanced component services can help you navigate sourcing challenges, streamline your ordering process and meet production deadlines.



Purchasing Support

Work efficiently with our eCommerce and eProcurement tools



newark.com/purchasing-procurement-support

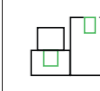


Kitting

Save time and money with streamlined sourcing and assembly



newark.com/kitting-services



Vendor Managed Inventory

Lower your inventory levels and consolidate your spend.



newark.com/vmi



Custom Shop

Replace obsolete components or source hard-to-find components.



newark.com/custom-shop



Packaging Solutions

Options for re-reeling, full reels and continuous strip are available.



newark.com/packaging-solutions



Calibration

Choose from multiple NIST traceable certificate options.



newark.com/calibration-services

SUPPORTING YOU AT EVERY STAGE



Most products **ship same day.**



950,00+ products available online



Local language customer service



Fast delivery



2000+ leading manufacturers



Free technical support



Quotes on customised products and on-demand products sourced directly from manufacturer



AHEAD OF WHAT'S POSSIBLE™



INNOVATING FOR HUMANITY

Discover the latest Analog
Devices products online today



Explore more:
newark.com/b/analog-devices